



## Электродвигатели MS

### ООО "ТД "СИТИ-РУС"

Адрес: 143920, Московская область, г. Балашиха,  
микрорайон Купавна, улица Линейная, дом 7, корпус 2  
Телефон: +7 (495) 925-88-56  
E-mail: [siti@siti.ru](mailto:siti@siti.ru)  
Website: [www.siti.ru](http://www.siti.ru)

### Operating Conditions

- Ambient temperature: -20°C ≤ 0 ≤ 40°C
- Altitude: Altitude should be lower than 1000meters above sea level.
- Rated voltage: 220/380V 230/400V 380/660V 400/690V
- Rated frequency: 50HZ 60HZ
- Connection: Star-connection for 3kw or less whereas delta-connection for 4KW or more.
- Duty/Rating: Continuous(S1)
- Insulation class: F, the temperature rise of the stator winding is examined at 80K(by resistance method)
- Protection class: IP54,IP55.
- Cooling method: IC411

This series motors from H63 to 355 frame size, Among of them, the frames and end-shields of the frame size from H63 to H160 are made of cast iron or aluminum-alloy, and the frames of H180 or over are made of cast iron with sufficient strength .

All cooling ribs of motors assume vertical or horizon-tal distribution. So, the motor entirely looks very beautiful.

The terminal boxes are made of cast iron or aluminum-alloy, die-casting for frame size H63 up to H280 ,high strength cast iron for H315, located on top or a side of the motor for offering users choose.

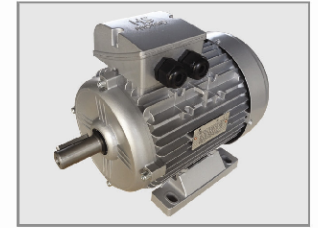
### Bearing size

机座 Frame	级数 Poles	轴伸端 Drive End	非轴伸端 Non-drive End
63	2, 4	6201-C3(ZZ-C3)	6201-C3(ZZ-C3)
71	2, 4, 6	6202-C3(ZZ-C3)	6202-C3(ZZ-C3)
80	2, 4, 6, 8	6204-C3(ZZ-C3)	6204-C3(ZZ-C3)
90	2	6205-C3(ZZ-C3)	6304-C3(ZZ-C3)
90	4, 6, 8	6205-C3(ZZ-C3)	6205-C3(ZZ-C3)
100	2, 4, 6, 8	6206-C3(ZZ-C3)	6206-C3(ZZ-C3)
112	2, 4, 6, 8	6306-C3(ZZ-C3)	6306-C3(ZZ-C3)
132	2, 4, 6, 8	6306-C3(ZZ-C3)	6308-C3(ZZ-C3)
160	2, 4, 6, 8	6309-C3	6509-C3
180	2, 4, 6, 8	6311-C3	6511-C3
200	2, 4, 6, 8	6312-C3	6512-C3
225	2, 4, 6, 8	6313-C3	6513-C3
250	2, 4, 6, 8	6314-C3	6514-C3
280	2	6314-C3	6514-C3
	4, 6, 8	6317-C3	6517-C3
315	2	6317-C3	6517-C3
	4, 6, 8	NU319(6319-C3)	6519-C3
355	2	6319-C3	6519-C3
	4, 6, 8	NU322(6319-C3)	6522-C3

### Cable Entry

接线盒分档 Classified No.	机座号范围 Frame size	进线孔尺寸(引接线器) Entry hole size (For lead cable)
1	H63-71	1XM16X1.5
2	H80-100	2XM25X1.5
3	H112-132	2XM32X1.5
4	H160-180	2XM40X1.5
5	H200-225	2XM50X1.5
6	H250-280	2XM53X1.5
7	H315	2XM63X1.5
8	H355	2XM63X1.5

## HSA IE3 Series Aluminum Housing High Efficiency Three Phase Asynchronous Induction Motor



### Speed 3000RPM 2-Pole 50Hz

型号 Type	额定功率 Rated Output		额定转速 Rated Speed	IE3 效率 Efficiency	75% 效率 Efficiency	50% 效率 Efficiency	功率因数 Power Factor cosΦ	额定电流 Rated Current			额定转矩 Rated Torque Nm	堵转转矩 / 额定转矩 Te/Tn	最大转矩 / 额定转矩 Tmax/Tn	堵转电流 / 额定电流 Is/In	重量 Weight kg
	kW	HP	rpm	%	%	%		380	400	415					
HSAIE3 801-2	0.75	1	2880	80.7	80.8	79.7	0.83	1.7	1.6	1.6	2.49	1.8	3.5	5.5	13
HSAIE3 902-2	1.1	1.5	2880	82.7	82.9	80.7	0.83	2.4	2.3	2.2	3.05	2.6	3.5	7.5	15
HSAIE3 90S-2	1.5	2	2885	84.2	84.4	82.2	0.83	3.3	3.1	3	4.85	2.6	3.5	7.1	19
HSAIE3 90L-2	2.2	3	2895	85.9	86.0	83.9	0.85	4.6	4.3	4.2	7.26	2	3	7	22
HSAIE3 100L-2	3	4	2895	87.1	87.2	85.1	0.86	5.9	5.6	5.4	9.9	2	3.2	8.6	31
HSAIE3 112M-2	4	5.5	2905	88.1	88.2	86.1	0.88	7.8	7.4	7.2	13.1	1.8	2.9	8	34
HSAIE3 132S1-2	5.5	7.5	2930	89.2	89.2	87.2	0.88	11	10	9.8	17.9	2.1	2.5	7.5	49.5
HSAIE3 132S2-2	7.5	10	2930	90.1	90.1	88.1	0.88	14	14	13	24.4	2	3.5	7.3	55
HSAIE3 160M1-2	11	15	2945	91.2	91.2	89.2	0.9	20	19	19	35.7	2.3	2.6	7.3	99
HSAIE3 160M2-2	15	20	2945	91.9	92.0	89.9	0.91	27	26	25	48.6	1.9	2.3	7	108
HSAIE3 160L-2	18.5	25	2940	92.4	92.5	90.4	0.89	34	32	31	60.1	1.6	2.5	7	118

### Speed 1500RPM 4-Pole 50Hz

型号 Type	额定功率 Rated Output		额定转速 Rated Speed	IE3 效率 Efficiency	75% 效率 Efficiency	50% 效率 Efficiency	功率因数 Power Factor cosΦ	额定电流 Rated Current			额定转矩 Rated Torque Nm	堵转转矩 / 额定转矩 Te/Tn	最大转矩 / 额定转矩 Tmax/Tn	堵转电流 / 额定电流 Is/In	重量 Weight kg
	kW	HP	rpm	%	%	%		380	400	415					
HSAIE3 802-4	0.75	1	1420	82.5	82.7	80.5	0.74	1.86	1.77	1.7	5.04	2.9	3.6	6	16
HSAIE3 90S-4	1.1	1.5	1445	84.1	84.2	82.1	0.74	2.68	2.55	2.46	7.27	2.7	3.8	6.5	20
HSAIE3 90L-4	1.5	2	1445	85.3	85.4	83.2	0.74	3.61	3.43	3.3	9.91	3	3.6	6.8	23
HSAIE3 100L1-4	2.2	3	1435	86.7	86.9	84.7	0.78	4.93	4.68	4.52	14.6	2.5	3.5		32.5
HSAIE3 100L2-1	3	4	1435	87.7	87.8	85.7	0.78	6.66	6.32	6.09	20	2.6	3.5	7.2	39
HSAIE3 112M-4	4	5.5	1440	88.6	88.7	86.6	0.8	8.56	8.14	7.94	26.5	2.3	3.2	7	44
HSAIE3 132S-4	5.5	7.5	1460	89.6	89.7	87.6	0.8	11.6	11.1	10.7	36	2.7	3.5	7.1	54.5
HSAIE3 132M-4	7.5	10	1460	90.4	90.6	88.4	0.82	15.3	14.6	14	49.1	2.7	3.8	7.2	66
HSAIE3 160M-4	11	15	1465	91.4	91.5	89.4	0.82	22.3	21.2	20.4	71.7	1.9	2.3	6.8	102
HSAIE3 160L-4	15	20	1465	92.1	92.3	90.1	0.82	30.1	28.6	27.6	97.8	1.8	2.4	6.8	117

### Speed 1000RPM 6-Pole 50Hz

型号 Type	额定功率 Rated Output		额定转速 Rated Speed	IE3 效率 Efficiency	75% 效率 Efficiency	50% 效率 Efficiency	功率因数 Power Factor cosΦ	额定电流 Rated Current			额定转矩 Rated Torque Nm	堵转转矩 / 额定转矩 Te/Tn	最大转矩 / 额定转矩 Tmax/Tn	堵转电流 / 额定电流 Is/In	重量 Weight kg
	kW	HP	rpm	%	%	%		380	400	415					
HSAIE3 90S-6	0.75	1	935	78.9	79.1	76.9	0.61	2.36	2.2	2.2	7.66	2.5	3.3	4.5	20
HSAIE3 90L-6	1.1	1.5	945	81.0	81.1	79.0	0.69	2.99	2.8	2.7	11.1	1.7	3.3	4.4	23
HSAIE3 100L-6	1.5	2	950	82.5	82.6	80.5	0.69	4	3.8	3.7	15.1	2.3	3	5	30
HSAIE3 112M-6	2.2	3	955	84.3	84.4	82.3	0.71	5.58	5.3	5.1	22	2.6	3	5.5	36
HSAIE3 132S-6	3	4	965	85.6	85.6	83.6	0.71	7.48	7.1	6.9	29.7	2	3.1	5.5	46
HSAIE3 132M1-6	4	5.5	965	86.6	86.9	84.8	0.71	9.85	9.4	9	39.6	2.1	2.6	5.7	55
HSAIE3 132M2-6	5.5	7.5	970	88.0	88.2	86.0	0.75	12.6	12	12	54.1	1.7	2.6	6	65.5
HSAIE3 160M-6	7.5	10	970	89.1	89.3	87.1	0.77	16.6	16	15	73.8	1.7	2.5	5.9	103
HSAIE3 160L-6	11	15	970	90.3	90.5	89.3	0.79	23.4	22	21	108.3	1.5	2.4	6	116

## HSC IE3 Series Cast Iron Housing High Efficiency Three Phase Asynchronous Induction Motor



### ▲ Speed 3000RPM 2-Pole 50Hz

型号 Type	额定功率 Rated Output		额定转速 Rated Speed	IE3 效率 Efficiency %	75% 效率 Efficiency %	50% 效率 Efficiency %	功率因数 Power Factor cosφ	额定电流 Rated Current			额定转矩 Rated Torque Nm	堵转转矩 / 额定转矩 Ts/Tn	最大转矩 / 额定转矩 Tmax/Tn	堵转电流 / 额定电流 Is/In	重量 Weight kg
	kW	HP	rpm	%	%	%		380 400 415							
								A	A	A					
HSCIE3 801-2	0.75	1	2880	80.7	80.8	78.7	0.83	1.7	1.6	1.56	2.49	1.8	3.5	5.5	20
HSCIE3 802-2	1.1	1.5	2880	82.7	82.9	80.7	0.83	2.43	2.3	2.22	3.65	2.6	3.5	7.5	21
HSCIE3 90S-2	1.5	2	2895	84.2	84.4	82.2	0.83	3.25	3.09	2.98	4.95	2.6	3.5	7.1	26
HSCIE3 90L-2	2.2	3	2895	85.9	86.0	83.9	0.85	4.57	4.34	4.19	7.26	2	3	7	29
HSCIE3 100L-2	3	4	2895	87.1	87.2	85.1	0.86	5.94	5.64	5.44	9.9	2	3.2	8.6	43
HSCIE3 112M-2	4	5.5	2905	86.1	86.2	86.1	0.88	7.83	7.44	7.17	13.1	1.8	2.9	8	51
HSCIE3-132S1-2	5.5	7.5	2930	89.2	89.2	87.2	0.88	10.6	10.1	9.75	17.9	2.1	2.5	7.5	76
HSCIE3 132S2-2	7.5	10	2930	90.1	90.1	89.1	0.88	14.4	13.7	13.2	24.4	2	3.5	7.3	84
HSCIE3 160M1-2	11	15	2945	91.2	91.2	89.2	0.9	20.4	19.3	18.6	35.7	2.3	2.6	7.3	128
HSCIE3 160M2-2	15	20	2945	91.9	92.0	89.9	0.91	27.2	25.9	24.9	48.6	1.9	2.3	7	140
HSCIE3 160L-2	18.5	25	2940	92.4	92.5	90.4	0.89	34.1	32.4	31.3	60.1	1.6	2.5	7	155
HSCIE3 180M-2	22	30	2955	92.7	92.7	90.7	0.9	40.1	38.1	36.7	71.1	1.6	2.5	7	192
HSCIE3 200L1-2	30	40	2960	93.3	93.4	91.3	0.89	54.8	52.1	50.2	96.8	1.5	2.5	7	245
HSCIE3 200L2-2	37	50	2960	93.7	93.8	91.7	0.91	65.9	62.6	60.3	119	1.5	2.5	7.3	267
HSCIE3 225M-2	45	60	2965	94.0	94.2	92.0	0.88	82.5	78.4	75.5	145	1.6	2.5	6.8	303
HSCIE3 250M-2	55	75	2970	94.3	94.3	92.3	0.89	99.6	94.6	91.2	176.9	1.6	2.6	7.2	408
HSCIE3 280S-2	75	100	2975	94.7	94.8	92.7	0.9	134	127	122	240.8	1.2	2	7.2	548
HSCIE3 280M-2	90	125	2975	95.0	95.1	93.0	0.89	162	153	148	288.9	1.2	2	7.4	595
HSCIE3 315S-2	110	150	2975	95.2	95.2	93.2	0.9	195	185	179	352.8	1.2	2	7.3	958
HSCIE3 315M-2	132	180	2975	95.4	95.5	93.4	0.9	233	222	214	423.3	1.3	2.1	7.3	1017
HSCIE3 315L1-2	160	200	2980	95.6	95.6	93.6	0.9	283	268	259	512.8	1.2	2	6.8	1119
HSCIE3 315L2-2	200	270	2980	95.8	95.8	93.8	0.91	349	331	319	640.9	1.1	2	7.8	1150
HSCIE3 355M-2	250	340	2980	95.8	95.9	93.8	0.92	431	405	394	800.6	1.1	2	7.9	1948
HSCIE3 355L-2	315	430	2980	95.8	95.8	93.8	0.92	543	516	497	1000	1.1	2	7.9	2356

### ▲ Speed 1500RPM 4-Pole 50Hz

型号 Type	额定功率 Rated Output		额定转速 Rated Speed	IE3 效率 Efficiency %	75% 效率 Efficiency %	50% 效率 Efficiency %	功率因数 Power Factor cosφ	额定电流 Rated Current			额定转矩 Rated Torque Nm	堵转转矩 / 额定转矩 Ts/Tn	最大转矩 / 额定转矩 Tmax/Tn	堵转电流 / 额定电流 Is/In	重量 Weight kg
	kW	HP	rpm	%	%	%		380 400 415							
								A	A	A					
HSCIE3 802-4	0.75	1	1420	82.5	82.7	80.5	0.74	1.86	1.77	1.7	5.04	2.9	3.6	6	22
HSCIE3 90S-4	1.1	1.5	1445	84.1	84.2	82.1	0.74	2.58	2.55	2.46	7.27	2.7	3.8	6.5	27
HSCIE3 90L-4	1.5	2	1445	85.3	85.4	83.3	0.74	3.61	3.43	3.3	9.91	3	3.6	6.8	32
HSCIE3 100L1-4	2.2	3	1435	86.7	86.9	84.7	0.78	4.93	4.68	4.52	14.6	2.5	3.5	7.2	44
HSCIE3 100L2-4	3	4	1435	87.7	87.8	85.7	0.78	6.86	6.32	6.09	20	2.6	3.5	7.2	49
HSCIE3 112M-4	4	5.5	1440	88.6	88.7	86.6	0.8	8.56	8.14	7.84	26.5	2.3	3.2	7	56
HSCIE3 132S-4	5.5	7.5	1460	89.6	89.7	87.6	0.8	11.6	11.1	10.7	36	2.7	3.5	7.1	81
HSCIE3 132M-4	7.5	10	1460	90.4	90.6	88.4	0.82	15.3	14.6	14	49.1	2.7	3.8	7.1	91
HSCIE3 160M-4	11	15	1485	91.4	91.5	89.4	0.82	22.3	21.2	20.4	71.7	1.9	2.3	6.8	141
HSCIE3 160L-4	15	20	1465	92.1	92.3	90.1	0.82	30.1	28.6	27.6	97.8	1.8	2.4	6.8	151
HSCIE3 180M-4	18.5	25	1470	92.5	92.7	90.6	0.84	36.1	34.3	33.1	120.2	1.8	2.5	6.9	190
HSCIE3 180L-4	22	30	1470	93.0	93.0	91.0	0.85	42.3	40.2	38.7	142.9	1.8	2.5	7	205
HSCIE3 200L-4	30	40	1475	93.5	93.8	91.6	0.86	56.5	53.7	51.7	194.2	1.8	2.3	6.8	275
HSCIE3 225S-4	37	50	1485	93.9	94.0	91.9	0.86	69.5	66.1	63.7	237.9	1.7	2.3	7.1	315
HSCIE3 225M-4	45	60	1485	94.2	94.4	92.2	0.87	83.2	79.1	76.2	284.4	1.8	2.4	7.1	345
HSCIE3 250M-4	55	75	1485	94.6	94.6	92.6	0.87	101	96.2	92.7	353.7	1.8	2.4	7	421
HSCIE3 280S-4	75	100	1485	95.0	95.1	93.0	0.87	138	131	126	482	1.8	2.2	6.9	538
HSCIE3 280M-4	90	125	1485	95.2	95.4	93.2	0.87	165	157	151	578.4	1.6	2.1	7.2	638
HSCIE3 315S-4	110	150	1490	95.4	95.5	93.4	0.88	199	189	182	705	1.6	2.1	7.2	958
HSCIE3 315M-4	132	180	1490	95.5	95.7	93.6	0.88	238	226	216	847.2	1.5	2	7.2	1045
HSCIE3 315L1-4	160	200	1490	95.8	95.8	93.8	0.88	288	274	264	1027	1.5	2	6.8	1115
HSCIE3 315L2-4	200	270	1490	96.0	96.0	94.0	0.88	360	342	329	1282	1.6	2.1	7.2	1233
HSCIE3 355M-4	250	340	1490	96.0	96.1	94.0	0.88	449	427	411	1602	1.4	2.1	7.3	1744
HSCIE3 355L-4	315	430	1490	96.0	96.0	94.0	0.88	567	538	518	2019	1.4	2	7.4	1950

### ▲ Speed 1000RPM 6-Pole 50Hz

型号 Type	额定功率 Rated Output		额定转速 Rated Speed	IE3 效率 Efficiency %	75% 效率 Efficiency %	50% 效率 Efficiency %	功率因数 Power Factor cosφ	额定电流 Rated Current			额定转矩 Rated Torque Nm	堵转转矩 / 额定转矩 Ts/Tn	最大转矩 / 额定转矩 Tmax/Tn	堵转电流 / 额定电流 Is/In	重量 Weight kg
	kW	HP	rpm	%	%	%		380 400 415							
								A	A	A					
HSCIE3 90S-6	0.75	1	905	78.9	79.1	77.9	0.61	2.36	2.24	2.16	7.66	2.5	3.3	4.5	27
HSCIE3 90L-6	1.1	1.5	945	81.0	81.1	79.0	0.69	2.99	2.84	2.73	11.1	1.7	3.3	4.4	29
HSCIE3 100L-6	1.5	2	950	82.5	82.6	80.5	0.69	4	3.8	3.66	15.1	2.3	3	5	42
HSCIE3 112M-6	2.2	3	955	84.3	84.4	82.3	0.71	5.58	5.3	5.11	22	2.6	3	5.5	53
HSCIE3 132S-6	3	4	965	85.6	85.8	83.6	0.71	7.48	7.11	6.85	29.6	2	3.1	5.5	79
HSCIE3 132M1-6	4	5.5	965	86.8	86.9	84.8	0.71	9.85	9.36	9.02	39.5	2.1	2.6	5.7	86
HSCIE3 132M2-6	5.5	7.5	965	88.0	88.2	86.0	0.75	12.6	12	11.6	54.3	1.7	2.6	6	98
HSCIE3 160M-6	7.5	10	970	89.1	89.3	87.1	0.77	16.6	15.7	15.2	73.8	1.7	2.5	5.9	154
HSCIE3 160L-6	11	15	970	90.3	90.5	88.3	0.79	23.4	22.2	21.4	108.3	1.5	2.4	6	170
HSCIE3 180L-6	15	20	975	91.2	91.3	89.2	0.81	30.8	29.3	28.2	146.5	1.5	2.4	6	203
HSCIE3 200L1-6	18.5	25	980	91.7	91.9	89.7	0.81	37.8	35.9	34.6	180.3	1.6	2.4	6.5	241
HSCIE3 200L2-6	22	30	980	92.2	92.3	90.2	0.83	43.6	41.4	40	214.4	1.7	2.3	6	256
HSCIE3 225M-6	30	40	980	92.9	93.1	90.9	0.84	58.3	55.4	53.4	282.3	1.9	2.2	6.5	322
HSCIE3 250M-6	37	50	985	93.3	93.3	91.3	0.84	71.7	68.1	65.7	357.7	1.9	2.2	6.8	405
HSCIE3 280S-6	45	60	985	93.7	93.8	91.7	0.85	85.8	81.5	78.5	436.3	1.8	2.2	6.5	521
HSCIE3 280M-6	55	75	985	94.1	94.2	92.1	0.85	104	99.1	95.6	533.2	1.8	2.2	6	570
HSCIE3 315S-6	75	100	985	94.6	94.6	92.6	0.85	142	135	130	727.2	1.6	2	6.5	941
HSCIE3 315M-6	90	125	985	94.9	95.0	92.9	0.85	169	161	155	869.9	1.6	2	6.8	1021
HSCIE3 315L1-6	110	150	985	95.1	95.2	93.1	0.86	204	194	187	1063	1.5	2	6.8	1094
HSCIE3 315L2-6	132	180	990	95.4	95.4	93.4	0.86	244	232	224	1276	1.4	2.1	6.8	1216
HSCIE3 355M1-6	160	200	990	95.5	95.6	93.6	0.86	296	281	271	1543	1.4	2	7.1	1591
HSCIE3 355M2-6	200	270	990	95.8	95.8	93.8	0.86	360	342	330	1929	1.3	2	7.2	1642
HSCIE3 355L-6	250	340	990	95.8	95.8	93.8	0.86	451	428	413	2412	1.3	2	7.2	1744

## HSA IE2 Series Aluminum Housing High Efficiency Three Phase Asynchronous Induction Motor



### ▲ SPEED 3000RPM 2-POLE 50HZ

型号 Type	额定功率 Rated Output		额定转速 Rated Speed	IE2 效率 Efficiency	75% 效率 Efficiency	50% 效率 Efficiency	功率因数 Power Factor cosΦ	额定电流 Rated Current			额定转矩 Rated Torque Nm	堵转转矩 / 额定转矩 Ts/Tn	最大转矩 / 额定转矩 Tmax/Tn	堵转电流 / 额定电流 Is/In	重量 Weight kg
	kW	HP	rpm	%	%	%		380	400	415					
HSAIE2 301-2	0.75	1	2975	77.4	77.7	75.5	0.83	1.77	1.98	1.62	2.49	2.3	2.3	6.8	11
HSAIE2 302-2	1.1	1.5	2975	79.6	79.9	77.6	0.84	2.5	2.37	2.29	3.65	2.3	2.3	7.3	12
HSAIE2 305-2	1.5	2	2990	81.3	81.6	79.7	0.84	3.32	3.16	3.04	4.96	2.3	2.3	7.6	13.5
HSAIE2 30L-2	2.2	3	2990	83.2	83.5	81.5	0.85	4.72	4.48	4.32	7.27	2.3	2.3	7.8	15.5
HSAIE2 100L-2	3	4	2990	84.6	84.9	82.8	0.87	6.17	5.86	5.65	9.91	2.3	2.3	8.1	21
HSAIE2 112M-2	4	5.5	2915	85.8	86.1	84.1	0.88	8.04	7.64	7.36	13.11	2.3	2.3	8.3	28
HSAIE2 132S1-2	5.5	7.5	2935	87.0	87.3	85.3	0.86	11.2	10.6	10.2	17.88	2.2	2.3	8.0	43
HSAIE2 132S2-2	7.5	10	2940	88.1	88.5	86.3	0.88	14.6	13.9	13.4	24.36	2.2	2.3	7.8	45
HSAIE2 160M1-2	11	15	2930	89.4	89.8	87.6	0.89	21.0	19.9	19.2	35.85	2.2	2.3	7.9	94
HSAIE2 160M2-2	15	20	2330	90.3	90.7	88.5	0.89	26.4	26.9	26.0	48.89	2.2	2.3	8.0	103
HSAIE2 160L-2	18.5	25	2935	90.9	91.3	89.1	0.89	34.7	33.0	31.8	60.15	2.2	2.3	8.1	121

### ▲ SPEED 1500RPM 4-POLE 50HZ

型号 Type	额定功率 Rated Output		额定转速 Rated Speed	IE2 效率 Efficiency	75% 效率 Efficiency	50% 效率 Efficiency	功率因数 Power Factor cosΦ	额定电流 Rated Current			额定转矩 Rated Torque Nm	堵转转矩 / 额定转矩 Ts/Tn	最大转矩 / 额定转矩 Tmax/Tn	堵转电流 / 额定电流 Is/In	重量 Weight kg
	kW	HP	rpm	%	%	%		380	400	415					
HSAIE2 90L-4	0.75	1	1400	79.6	79.9	78.0	0.76	1.88	1.78	1.72	5.12	2.3	2.3	6.3	11
HSAIE2 90S-4	1.1	1.5	1440	81.4	81.7	79.8	0.77	2.66	2.53	2.44	7.3	2.3	2.3	6.5	12.5
HSAIE2 90L-4	1.5	2	1445	82.8	83.1	81.1	0.77	3.57	3.39	3.27	9.91	2.3	2.3	6.6	15.5
HSAIE2 100L1-4	2.2	3	1440	84.3	84.6	82.6	0.81	4.88	4.64	4.47	14.6	2.3	2.3	6.9	22
HSAIE2 100L2-4	3	4	1440	85.5	85.8	83.8	0.82	6.50	6.18	5.95	19.9	2.3	2.3	7.5	24.5
HSAIE2 112M-4	4	5.5	1445	86.6	86.9	84.9	0.82	8.55	8.12	7.83	26.4	2.3	2.3	7.6	31
HSAIE2 132S-4	5.5	7.5	1455	87.7	88.0	85.9	0.83	11.5	10.9	10.5	36.1	2.0	2.3	7.7	44
HSAIE2 132M-4	7.5	10	1435	88.7	89.0	86.9	0.84	15.3	14.5	14.0	49.2	2.0	2.3	7.5	55
HSAIE2 160M-4	11	15	1460	89.8	90.1	88.0	0.84	22.1	21.0	20.3	71.9	2.2	2.3	7.4	97
HSAIE2 160L-4	15	20	1460	90.6	90.9	88.8	0.85	29.6	28.1	27.1	98.1	2.2	2.3	7.5	115

### ▲ SPEED 1000RPM 6-POLE 50HZ

型号 Type	额定功率 Rated Output		额定转速 Rated Speed	IE2 效率 Efficiency	75% 效率 Efficiency	50% 效率 Efficiency	功率因数 Power Factor cosΦ	额定电流 Rated Current			额定转矩 Rated Torque Nm	堵转转矩 / 额定转矩 Ts/Tn	最大转矩 / 额定转矩 Tmax/Tn	堵转电流 / 额定电流 Is/In	重量 Weight kg
	kW	HP	rpm	%	%	%		380	400	415					
HSAIE2 90S-6	0.75	1	935	75.0	76.1	74.4	0.72	2.08	1.98	1.90	7.67	2.1	2.1	5.8	12
HSAIE2 90L-6	1.1	1.5	945	78.1	78.3	76.5	0.72	2.97	2.82	2.72	11.1	2.1	2.1	5.9	15
HSAIE2 100L-6	1.5	2	945	79.8	80.0	78.2	0.75	3.80	3.61	3.48	15.2	2.1	2.1	6.0	20
HSAIE2 112M-6	2.2	3	960	81.8	82.0	80.2	0.76	5.37	5.10	4.92	21.5	2.1	2.1	6.0	26
HSAIE2 132S-6	3	4	965	83.3	83.5	81.6	0.76	7.19	6.83	6.58	29.7	2.0	2.1	6.2	41
HSAIE2 132M1-6	4	5.5	965	84.5	84.9	82.9	0.76	9.43	8.96	8.63	39.6	2.0	2.1	6.8	48
HSAIE2 132M2-6	5.5	7.5	965	86.0	86.3	84.3	0.77	12.6	12.0	11.5	54.4	2.0	2.1	7.1	58
HSAIE2 160M-6	7.5	10	970	87.2	87.5	85.5	0.76	16.7	15.9	15.3	73.8	2.1	2.1	6.7	88
HSAIE2 160L-6	11	15	970	88.7	89.0	86.9	0.76	24.8	23.5	22.7	108.5	2.1	2.1	6.9	104

## HSC IE2 Series Cast Iron Housing High Efficiency Three Phase Asynchronous Induction Motor



### ▲ Speed 3000RPM 2-Pole 50Hz

型号 Type	额定功率 Rated Output		额定转速 Rated Speed	IE2 效率 Efficiency	75% 效率 Efficiency	50% 效率 Efficiency	功率因数 Power Factor cosΦ	额定电流 Rated Current			额定转矩 Rated Torque Nm	堵转转矩 / 额定转矩 Ts/Tn	最大转矩 / 额定转矩 Tmax/Tn	堵转电流 / 额定电流 Is/In	重量 Weight kg
	kW	HP	rpm	%	%	%		380	400	415					
HSCIE2 801-2	0.75	1	2875	77.4	77.7	75.5	0.83	1.77	1.98	1.62	2.49	2.3	2.3	6.8	18
HSCIE2 802-2	1.1	1.5	2875	79.6	79.9	77.6	0.84	2.5	2.37	2.29	3.65	2.3	2.3	7.3	19
HSCIE2 90S-2	1.5	2	2890	81.3	81.6	79.7	0.84	3.32	3.16	3.04	4.96	2.3	2.3	7.6	24
HSCIE2 90L-2	2.2	3	2890	83.2	83.5	81.5	0.85	4.72	4.48	4.32	7.27	2.3	2.3	7.8	27
HSCIE2 100L-2	3	4	2890	84.6	84.9	82.8	0.87	6.17	5.86	5.65	9.91	2.3	2.3	8.1	41
HSCIE2 112M-2	4	5.5	2915	85.8	86.1	84.1	0.88	8.04	7.64	7.36	13.11	2.3	2.3	8.3	48
HSCIE2 132S1-2	5.5	7.5	2935	87.0	87.3	85.3	0.86	11.2	10.6	10.2	17.88	2.2	2.3	8.0	72
HSCIE2 132S2-2	7.5	10	2940	88.1	88.5	86.3	0.88	14.6	13.9	13.4	24.36	2.2	2.3	7.8	80
HSCIE2 160M1-2	11	15	2930	89.4	89.8	87.6	0.89	21.0	19.9	19.2	35.85	2.2	2.3	7.9	122
HSCIE2 160M2-2	15	20	2930	90.3	90.7	88.5	0.89	26.4	26.9	26.0	48.89	2.2	2.3	8.0	135
HSCIE2 160L-2	18.5	25	2935	90.9	91.3	89.1	0.89	34.7	33.0	31.8	60.15	2.2	2.3	8.1	151
HSCIE2 180M-2	22	30	2940	91.3	91.7	89.5	0.88	41.6	39.5	38.1	71.46	2.2	2.3	8.2	185
HSCIE2 200L1-1	30	40	2950	92.0	92.4	90.2	0.88	56.2	53.4	51.5	97.12	2.2	2.3	7.5	240
HSCIE2 200L2-2	37	50	2950	92.5	92.9	90.7	0.89	68.2	64.8	62.5	119.78	2.2	2.3	7.5	260
HSCIE2 225M-2	45	60	2960	92.9	93.3	91.0	0.89	82.5	78.4	75.6	145.19	2.2	2.3	7.6	345
HSCIE2 250M-2	55	75	2965	93.2	93.6	91.3	0.90	99.5	94.5	91.1	177.15	2.2	2.3	7.6	400
HSCIE2 280S-2	75	100	2970	93.8	94.2	91.90	0.90	135	128	123	241.16	2.0	2.3	6.9	535
HSCIE2 280M-2	90	125	2970	94.1	94.5	92.2	0.91	160	152	146	289.39	2.0	2.3	7.0	580
HSCIE2 315S-2	110	150	2975	94.3	94.7	92.4	0.91	194	185	178	353.11	2.0	2.2	7.1	940
HSCIE2 315M-2	132	180	2975	94.6	95.0	92.7	0.91	233	221	213	423.73	2.0	2.2	7.1	1001
HSCIE2 315L1-2	160	200	2975	94.8	95.2	92.9	0.92	278	265	255	513.61	2.0	2.2	7.1	1110
HSCIE2 315L2-2	200	270	2975	95.0	95.4	93.1	0.92	348	330	318	642.02	2.0	2.2	7.1	1140
HSCIE2 355M-2	250	340	2980	95.0	95.4	93.1	0.92	434	412	398	801.17	2.0	2.2	7.1	1930
HSCIE2 365L-2	315	430	2990	95.0	95.4	93.1	0.92	547	520	501	1000.48	2.0	2.2	7.1	2345

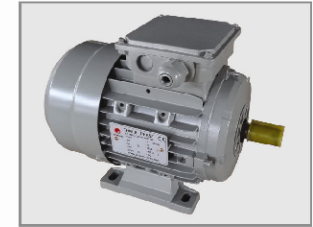
▲ Speed 1500RPM 4-Pole 50Hz

型号 Type	额定功率 Rated Output		额定转速 Rated Speed rpm	IE2 效率 Efficiency %	75% 效率 Efficiency %	50% 效率 Efficiency %	功率因数 Power Factor cos Φ	额定电流 Rated Current			额定转矩 Rated Torque Nm	堵转转矩 / 额定转矩 Ts/Tn	最大转矩 / 额定转矩 Tmax/Tn	堵转电流 / 额定电流 Is/In	重量 Weight kg
	kW	HP						380	400	415					
HSCIE2 802-4	0.75	1	1400	79.6	79.9	78.0	0.76	1.89	1.78	1.72	5.12	2.3	2.3	6.3	20
HSCIE2 90S-4	1.1	1.5	1440	81.4	81.7	79.8	0.77	2.66	2.53	2.44	7.3	2.3	2.3	6.5	25
HSCIE2 90L-4	1.5	2	1445	82.8	83.1	81.1	0.77	3.57	3.30	3.27	9.01	2.3	2.3	6.6	30
HSCIE2 100L1-4	2.2	3	1440	84.3	84.6	82.6	0.81	4.88	4.64	4.47	14.6	2.3	2.3	6.9	41
HSCIE2 100L2-4	3	4	1440	85.5	85.8	83.8	0.82	6.50	6.18	5.95	19.9	2.3	2.3	7.5	45
HSCIE2 112M-4	4	5.5	1445	86.6	86.9	84.9	0.82	8.55	8.12	7.83	28.4	2.3	2.3	7.6	52
HSCIE2 132S-4	5.5	7.5	1455	87.7	88.0	85.9	0.83	11.5	10.9	10.5	39.1	2.0	2.3	7.7	76
HSCIE2 132M-4	7.5	10	1455	88.7	89.0	86.9	0.84	15.3	14.5	14.0	49.2	2.0	2.3	7.5	88
HSCIE2 160M-4	11	15	1460	89.8	90.1	88.0	0.84	22.1	21.0	20.3	71.9	2.2	2.3	7.4	135
HSCIE2 160L-4	15	20	1460	90.6	90.9	88.8	0.85	29.0	28.1	27.1	98.1	2.2	2.3	7.5	148
HSCIE2 180M-4	18.5	25	1470	91.2	91.5	89.4	0.86	35.8	34.0	32.8	120.2	2.2	2.3	7.5	182
HSCIE2 180L-4	22	30	1470	91.6	91.9	89.8	0.86	42.3	40.2	38.8	142.9	2.2	2.3	7.7	195
HSCIE2 200L-4	30	40	1470	92.3	92.6	90.5	0.86	57.3	54.4	52.5	194.9	2.2	2.3	7.8	270
HSCIE2 225S-4	37	50	1480	92.7	93.0	90.8	0.87	69.7	66.2	63.8	236.8	2.2	2.3	7.2	310
HSCIE2 225M-4	45	60	1480	93.1	93.4	91.2	0.87	84.3	80.1	77.2	290.4	2.2	2.3	7.3	340
HSCIE2 250M-4	55	75	1480	93.5	93.8	91.6	0.87	103	97.5	94.0	354.9	2.2	2.3	7.4	410
HSCIE2 280S-4	75	100	1480	94.0	94.3	92.1	0.87	139	132	127	484	2.2	2.3	7.4	530
HSCIE2 280M-4	90	125	1480	94.2	94.5	92.3	0.87	167	158	153	580.7	2.2	2.3	6.7	630
HSCIE2 315S-4	110	150	1485	94.5	94.8	92.6	0.88	201	191	184	707.4	2.2	2.2	6.9	840
HSCIE2 315M-4	132	180	1485	94.7	95.0	92.8	0.88	240	228	220	848.9	2.2	2.2	6.9	1030
HSCIE2 315L1-4	160	200	1485	94.9	95.2	93.0	0.89	288	273	263	1029	2.2	2.2	6.9	1100
HSCIE2 315L2-4	200	270	1485	95.1	95.4	93.2	0.89	359	341	328	1286	2.2	2.2	6.9	1220
HSCIE2 355M-4	250	340	1490	95.1	95.4	93.2	0.90	443	421	406	1602	2.2	2.2	6.9	1730
HSCIE2 355L-4	315	430	1490	95.1	95.4	93.2	0.90	559	531	511	2019	2.2	2.2	6.9	1938

▲ Speed 1000RPM 6-Pole 50Hz

型号 Type	额定功率 Rated Output		额定转速 Rated Speed rpm	IE2 效率 Efficiency %	75% 效率 Efficiency %	50% 效率 Efficiency %	功率因数 Power Factor cos Φ	额定电流 Rated Current			额定转矩 Rated Torque Nm	堵转转矩 / 额定转矩 Ts/Tn	最大转矩 / 额定转矩 Tmax/Tn	堵转电流 / 额定电流 Is/In	重量 Weight kg
	kW	HP						380	400	415					
HSCIE2 90S-6	0.75	1	935	75.0	75.1	74.4	0.72	2.08	1.98	1.90	7.67	2.1	2.1	5.8	24
HSCIE2 90L-6	1.1	1.5	945	78.1	78.3	76.5	0.72	2.97	2.82	2.72	11.1	2.1	2.1	5.9	26
HSCIE2 100L-6	1.5	2	945	79.8	80.0	78.2	0.75	3.80	3.61	3.48	15.2	2.1	2.1	6.0	40
HSCIE2 112M-6	2.2	3	960	81.8	82.0	80.2	0.76	5.37	5.10	4.92	21.9	2.1	2.1	6.0	50
HSCIE2 132S-6	3	4	965	83.3	83.5	81.6	0.76	7.19	6.83	6.58	29.7	2.0	2.1	6.2	75
HSCIE2 132M1-6	4	5.5	965	84.6	84.9	82.9	0.76	9.43	8.96	8.63	39.6	2.0	2.1	6.8	84
HSCIE2 132M2-6	5.5	7.5	965	86.0	86.3	84.3	0.77	12.6	12.0	11.5	54.4	2.0	2.1	7.1	95
HSCIE2 160M-6	7.5	10	970	87.2	87.5	85.5	0.78	16.7	15.9	15.3	73.8	2.1	2.1	6.7	150
HSCIE2 160L-6	11	15	970	88.7	89.0	86.9	0.78	24.8	23.5	22.7	108.3	2.1	2.1	6.9	162
HSCIE2 180L-6	15	20	975	89.7	90.0	87.9	0.81	31.4	29.8	28.7	146.9	2.0	2.1	7.2	190
HSCIE2 200L1-6	18.5	25	980	90.4	90.7	88.6	0.81	39.3	36.4	35.1	180.3	2.1	2.1	7.2	236
HSCIE2 200L2-6	22	30	980	90.9	91.2	89.1	0.83	44.3	42.0	40.5	214.4	2.1	2.1	7.3	250
HSCIE2 225M-6	30	40	980	91.7	92.1	89.9	0.84	59.2	56.2	54.2	292.3	2.0	2.1	7.1	315
HSCIE2 250M-6	37	50	980	92.2	92.5	90.4	0.86	70.8	67.3	64.8	360.6	2.1	2.1	7.1	395
HSCIE2 280S-6	45	60	990	92.7	93.0	90.8	0.86	85.8	81.5	78.5	438.5	2.1	2.0	7.2	513
HSCIE2 280M-6	55	75	980	93.1	93.4	91.2	0.86	104	99.2	95.6	536	2.1	2.0	7.2	560
HSCIE2 315S-6	75	100	985	93.7	94.0	91.6	0.86	141	134	129	727.2	2.0	2.0	6.7	930
HSCIE2 315M-6	90	125	985	94.0	94.3	92.1	0.86	169	160	155	872.6	2.0	2.0	6.7	1010
HSCIE2 315L1-6	110	150	985	94.3	94.6	92.5	0.86	206	195	189	1068	2.0	2.0	6.7	1080
HSCIE2 315L2-6	132	180	985	94.6	94.9	92.7	0.87	243	231	223	1290	2.0	2.0	6.7	1195
HSCIE2 355M1-6	160	200	990	94.8	95.1	92.9	0.88	291	277	267	1543	2.0	2.0	6.7	1580
HSCIE2 355M2-6	200	270	990	95.0	95.3	93.1	0.88	363	345	333	1929	2.0	2.0	6.7	1640
HSCIE2 355L-6	250	340	990	95.0	95.2	93.1	0.88	454	432	416	2412	2.0	2.0	6.7	1830

MS Series Aluminum Housing  
Three Phase Asynchronous Induction Motor



▲ SPEED 3000RPM 2-POLE 50HZ

型号 Type	额定功率 Rated Output		额定转速 Rated Speed rpm	效率 Efficiency %	功率因数 Power Factor cos Φ	额定电流 Rated Current			额定转矩 Rated Torque Nm	堵转转矩 / 额定转矩 Ts/Tn	最大转矩 / 额定转矩 Tmax/Tn	堵转电流 / 额定电流 Is/In	重量 Weight kg
	kW	HP				380	400	415					
MS 631-2	0.18	0.25	2720	65	0.8	0.53	0.5	0.48	0.61	2.2	2.2	5.5	4
MS 632-2	0.25	0.37	2720	68	0.81	0.69	0.66	0.63	0.96	2.2	2.2	5.5	4.2
MS 711-2	0.37	0.5	2740	70	0.81	0.99	0.94	0.91	0.26	2.2	2.2	6.1	5.2
MS 712-2	0.55	0.75	2740	73	0.82	1.4	1.33	1.28	1.88	2.2	2.3	6.1	6
MS 801-2	0.75	1	2840	72.1	0.83	1.9	1.8	1.74	2.52	2.3	2.4	6.1	9
MS 802-2	1.1	1.5	2840	75.0	0.84	2.65	2.51	2.42	3.7	2.4	2.4	6.3	11
MS 90S-2	1.5	2	2840	77.2	0.84	3.51	3.33	3.21	5.04	2.3	2.3	6.5	13
MS 90L-2	2.2	3	2840	79.7	0.85	4.93	4.68	4.51	7.4	2.4	2.5	6.8	15.0
MS 100L-2	3	4	2860	81.5	0.87	6.41	6.09	5.87	10	2.4	2.4	6.9	20
MS 112M-2	4	5.5	2880	83.1	0.88	8.29	7.88	7.59	13.26	2.3	2.4	7.0	26
MS 132S1-2	5.5	7.5	2900	84.7	0.88	11.2	10.6	10.3	18.11	2.2	2.3	7.2	40.0
MS 132S2-2	7.5	10	2900	86.0	0.88	15.0	14.3	13.8	24.7	2.3	2.4	6.9	43.0
MS 160M1-2	11	15	2930	87.6	0.89	21.4	20.3	19.6	35.85	2.2	2.3	6.8	68
MS 160M2-2	15	20	2930	88.7	0.89	28.8	27.4	26.4	48.89	2.3	2.3	7.0	98.0

▲ SPEED 1500RPM 4-POLE 50HZ

型号 Type	额定功率 Rated Output		额定转速 Rated Speed rpm	效率 Efficiency %	功率因数 Power Factor cos Φ	额定电流 Rated Current			额定转矩 Rated Torque Nm	堵转转矩 / 额定转矩 Ts/Tn	最大转矩 / 额定转矩 Tmax/Tn	堵转电流 / 额定电流 Is/In	重量 Weight kg
	kW	HP				380	400	415					
MS 631-4	0.12	0.17	1310	57.0	0.72	0.44	0.42	0.41	0.84	2.1	2.2	4.4	4.0
MS 632-4	0.18	0.25	1310	60.0	0.73	0.62	0.59	0.57	1.26	2.1	2.2	4.4	4.5
MS 711-4	0.25	0.37	1330	65.0	0.74	0.79	0.75	0.72	1.73	2.1	2.2	5.2	5.5
MS 712-4	0.37	0.5	1330	67.0	0.75	1.12	1.06	1.02	2.54	2.1	2.2	5.2	6.0
MS 801-4	0.55	0.75	1390	71.1	0.75	1.57	1.49	1.43	3.78	2.4	2.3	5.2	8.5
MS 802-4	0.75	1	1390	72.1	0.76	2.08	1.97	1.90	5.15	2.3	2.3	6.1	9.5
MS 90S-4	1.1	1.5	1390	75.0	0.77	2.89	2.74	2.64	7.56	2.3	2.4	6.3	11.0
MS 90L-4	1.5	2	1390	77.2	0.79	3.73	3.55	3.42	10.31	2.4	2.4	6.1	14.0
MS 100L1-4	2.2	3	1390	79.7	0.81	5.17	4.91	4.74	15.12	2.3	2.4	6.5	19.0
MS 100L2-4	3	4	1410	81.5	0.82	6.81	6.47	6.24	20.32	2.5	2.5	6.5	22.0
MS 112M-4	4	5.5	1410	83.1	0.82	8.91	8.46	8.16	27.09	2.4	2.4	7.0	29.0
MS 132S-4	5.5	7.5	1435	84.7	0.83	11.9	11.3	10.9	36.6	2.3	2.4	7.0	41
MS 132M-4	7.5	10	1440	86.0	0.84	15.7	15.0	14.4	49.74	2.3	2.3	7.0	52
MS 160M-4	11	15	1440	87.6	0.84	22.7	21.8	20.8	72.95	2.2	2.3	6.5	90
MS 160L-4													

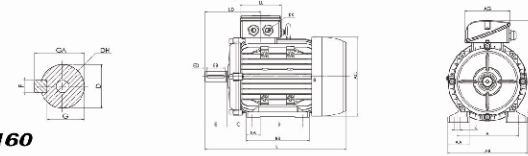
▲ SPEED 1000RPM 6-POLE 50HZ

型号 Type	额定功率 Rated Output		额定转速 Rated Speed rpm	效率 Efficiency %	功率因数 Power Factor cos Φ	额定电流 Rated Current			额定转矩 Rated Torque Nm	堵转转矩 / 额定转矩 Ts/Tn	最大转矩 / 额定转矩 Tmax/Tn	堵转电流 / 额定电流 Is/In	重量 Weight kg
	kW	HP				380	400	415					
MS 711-6	0.18	0.25	850	56.0	0.66	0.74	0.7	0.68	1.91	1.9	2.0	4.4	5
MS 712-6	0.25	0.37	850	59.0	0.68	0.85	0.9	0.87	2.65	1.9	2.0	4	6.0
MS 801-6	0.37	0.5	885	62.0	0.7	1.3	1.23	1.19	3.93	1.9	2.0	4.7	8.0
MS 802-6	0.55	0.75	885	65.0	0.72	1.78	1.69	1.63	5.84	1.9	2.1	4.7	9.5
MS 90S-6	0.75	1	910	70.0	0.72	2.26	2.15	2.07	7.87	2.1	2.1	5.5	10
MS 90L-6	1.1	1.5	910	72.9	0.73	3.14	2.98	2.87	11.54	2.0	2.1	5.5	14.0
MS 100L-6	1.5	2	920	75.2	0.75	4.04	3.83	3.70	15.57	2.0	2.0	6.0	20.0
MS 112M-6	2.2	3	935	77.7	0.76	5.65	5.36	5.17	22.47	2.2	2.2	6.0	25.0
MS 132S-6	3	4	960	79.7	0.76	7.52	7.14	6.88	29.84	2.0	2.1	6.5	38.0
MS 132M 6	4	5.5	960	81.4	0.76	9.8	9.31	8.97	39.79	2.0	2.1	6.5	46.0
MS 132M2-6	5.5	7.5	960	83.1	0.77	13.1	12.4	12.0	54.71	2.2	2.2	6.5	53.0
MS 160M-6	7.5	10	970	84.7	0.77	17.4	16.6	16	73.84	2.0	2.1	6.7	86.0
MS 160L-6	11	15	970	86.4	0.78	22.2	21.1	20.3	108.3	2.2	2.3	6.7	98.0

▲ SPEED 750RPM 8-POLE 50HZ

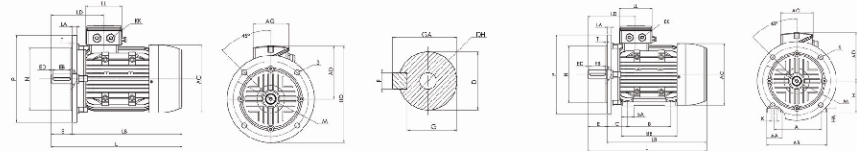
型号 Type	额定功率 Rated Output		额定转速 Rated Speed rpm	效率 Efficiency %	功率因数 Power Factor cos Φ	额定电流 Rated Current			额定转矩 Rated Torque Nm	堵转转矩 / 额定转矩 Ts/Tn	最大转矩 / 额定转矩 Tmax/Tn	堵转电流 / 额定电流 Is/In	重量 Weight kg
	kW	HP				380	400	415					
MS 801-8	0.18	0.25	645	51.0	0.61	0.80	0.84	0.8	2.49	1.8	1.9	3.3	9.5
MS 802-8	0.25	0.37	645	54.0	0.61	1.15	1.1	1.06	3.46	1.8	1.9	3.3	10.0
MS 90S-8	0.37	0.5	670	62.0	0.61	1.49	1.41	1.36	5.12	1.8	1.9	4.9	12.0
MS 90L-8	0.55	0.75	670	63.0	0.61	2.17	2.07	1.99	7.61	1.8	2	4	15.0
MS 100L1-8	0.75	1	680	71.0	0.67	2.4	2.28	2.19	10.23	1.8	2	4	16.5
MS 100L2-8	1.1	1.5	680	73.0	0.69	3.32	3.15	3.04	15	1.8	2	5	19.0
MS 112M-8	1.5	2	690	75.0	0.69	4.4	4.18	4.03	20.46	1.8	2	5	25.0
MS 132S-8	2.2	3	705	78.0	0.71	6.04	5.73	5.53	29.59	1.8	2	6	34.0
MS 132M-8	3	4	705	79.0	0.73	7.9	7.51	7.24	40.36	1.8	2	6	40.0
MS 160M1-8	4	5.5	720	81.0	0.73	10.3	9.76	9.41	53.06	1.9	2	6	62
MS 160M2-8	5.5	7.5	720	83.0	0.74	13.6	12.9	12.5	72.59	2	2	6	71
MS 160L 8	7.5	10	720	85.5	0.75	17.8	16.9	16.3	99.5	2	2	6	90

HSA Series Dimensional Drawings



▲ IM B3 H80-160

型号 Type	A	AA	AB	AC	AD	AG	B	BA	BB	C	D	DH	E	EB	ED	F	GA	H	HA	K	KK	L	LD	LL	
80	125	35	157	158	129	104	100	31	125	50	19	M6X16	40	30	5	6	15.5	21.5	80	8	10X14	1-M25X1.5	290	75	104
90S	140	37	173	175	140	104	100	31.5	125	56	24	M8X19	50	40	5	6	20	27	90	10	10X14	1-M25X1.5	325	95	104
90L	140	37	173	175	140	104	125	31.5	150	56	24	M8X19	50	40	5	6	20	27	90	10	10X14	1-M25X1.5	350	95	104
100L	160	40	196	198	156	104	140	39	172	63	28	M10X22	60	50	5	6	24	31	100	11	12X15	1-M32X1.5	398	88.5	104
112M	190	41	227	219	166	124	140	43	160	70	28	M10X22	60	50	5	6	24	31	112	12	12X15	2-M32X1.5	447	92	114
132S	216	51	262	258	188	124	140	46	166	89	38	M12X28	60	65	7.5	10	33	41	132	15	12X15	2-M32X1.5	475	100	114
132M	216	51	262	258	188	124	178	46	224	89	38	M12X28	60	65	7.5	10	33	41	132	15	12X15	2-M32X1.5	513	100	114
160M	254	55	304	315	242	182	210	50	260	108	42	M16X36	110	90	10	12	37	45	160	18	15X15	2-M40X1.5	609	159	154
160L	254	55	304	315	242	182	254	50	304	108	42	M16X36	110	90	10	12	37	45	160	18	15X15	2-M40X1.5	653	159	154

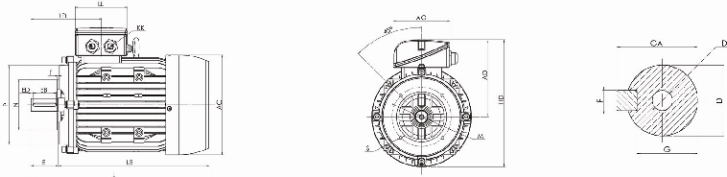


▲ IIM B5 H80-160

型号 Type	AC	AD	AG	D	DH	E	EB	ED	F	G	GA	HD	METRIC	I	IA	IB	D	II	M	N	P	S	T
80	158	129	104	19	M6X16	40	30	5	6	15.5	21.5	229	2-M25X1.5	290	12	250	75	104	165	130	200	12	3.5
90S	175	140	104	24	M8X19	50	40	5	8	20	27	240	2-M25X1.5	325	12	275	95	104	165	130	200	12	3.5
90L	175	140	104	24	M8X19	50	40	5	8	20	27	240	2-M25X1.5	350	12	300	95	104	165	130	200	12	3.5
100L	198	156	104	28	M10X22	60	50	5	8	24	31	281	2-M32X1.5	398	13	338	88.5	104	215	180	250	14.5	4
112M	219	166	124	28	M10X22	60	50	5	8	24	31	291	2-M32X1.5	447	14	387	92	114	215	180	250	14.5	4
132S	258	188	124	36	M12X28	80	65	7.5	10	33	41	336	2-M32X1.5	475	14	395	100	114	265	230	300	14.5	4
132M	258	188	124	36	M12X28	80	65	7.5	10	33	41	336	2-M32X1.5	513	14	433	100	114	265	230	300	14.5	4
160M	315	242	162	42	M16X36	110	90	10	12	37	45	417	2-M40X1.5	609	15	499	158.5	154	300	250	350	18.5	5
160L	315	242	162	42	M16X36	110	90	10	12	37	45	417	2-M40X1.5	653	15	543	158.5	154	300	250	350	18.5	5

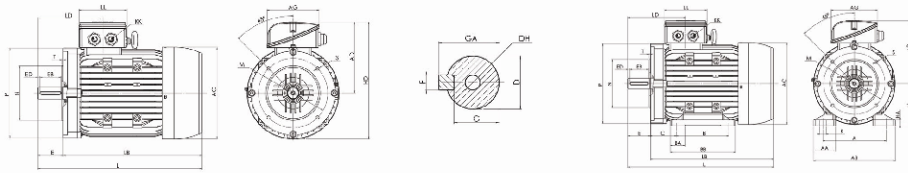
▲ IM B35 H80-160

型号 Type	A	AA	AB	AC	AD	AG	B	BA	BB	C	D	DH	E	E3	ED	F	G	GA	H	HA	K	METRIC	L	LA	LB	LD	LL	M	N	P	S	T
80	125	35	157	158	129	104	100	31	125	50	19	M6X16	40	30	5	6	15.5	21.5	80	8	10X14	2-M25X1.5	290	12	250	75	104	165	130	200	12	3.5
90S	140	37	173	175	140	104	100	31.5	125	56	24	M8X19	50	40	5	6	20	27	90	10	10X14	2-M25X1.5	325	12	275	95	104	165	130	200	12	3.5
90L	140	37	173	175	140	104	125	31.5	150	56	24	M8X19	50	40	5	6	20	27	90	10	10X14	2-M25X1.5	350	12	300	95	104	165	130	200	12	3.5
100L	160	40	196	198	156	104	140	39	172	63	28	M10X22	60	50	5	6	24	31	100	11	12X15	2-M25X1.5	398	13	338	88.5	104	215	180	250	14.5	4
112M	190	41	227	219	166	124	140	43	160	70	28	M10X22	60	50	5	6	24	31	112	12	12X15	2-M32X1.5	447	14	387	92	114	215	180	250	14.5	4
132S	216	51	262	258	188	124	140	46	166	89	38	M12X28	60	65	7.5	10	33	41	132	15	12X15	2-M32X1.5	475	14	395	100	114	265	230	300	14.5	4
132M	216	51	262	258	188	124	178	46	224	89	38	M12X28	60	65	7.5	10	33	41	132	15	12X15	2-M32X1.5	513	14	433	100	114	265	230	300	14.5	4
160M	254	55	304	315	242	182	210	50	260	108	42	M16X36	110	90	10	12	37	45	160	18	15X15	2-M40X1.5	609	15	499	158.5	154	300	250	350	18.5	5
160L	254	55	304	315	242	182	254	50	304	108	42	M16X36	110	90	10	12	37	45	160	18	15X15	2-M40X1.5	653	15	543	158.5	154	300	250	350	18.5	5



▲ IM B14A H80-132

型号 Type	AC	AD	AG	D	D-H	E	EB	ED	F	G	GA	HD	METRIC	L	LB	LD	LL	M	N	P	S	T
80	58	129	104	19	M6X16	40	30	5	6	15.5	21.5	208	2-M25X1.5	290	250	75	104	100	80	120	M8	3
90S	75	140	104	24	M8X19	50	40	5	8	20	27	227.5	2-M25X1.5	325	275	95	104	115	95	140	M8	3
90L	75	140	104	24	M8X19	50	40	5	8	20	27	227.5	2-M25X1.5	350	300	95	104	115	95	140	M8	3
100L	98	156	104	28	M10X22	60	50	5	8	24	31	255	2-M32X1.5	398	338	88.5	104	130	110	160	M8	3.5
112M	219	156	124	28	M10X22	60	50	5	8	24	31	275.5	2-M32X1.5	447	387	92	114	130	110	160	M8	3.5
132S	258	188	124	38	M12X28	80	65	7.5	10	33	41	317	2-M32X1.5	475	395	100	114	155	130	200	M10	3.5
132M	258	188	124	38	M12X28	80	65	7.5	10	33	41	317	2-M32X1.5	513	433	100	114	155	130	200	M10	3.5



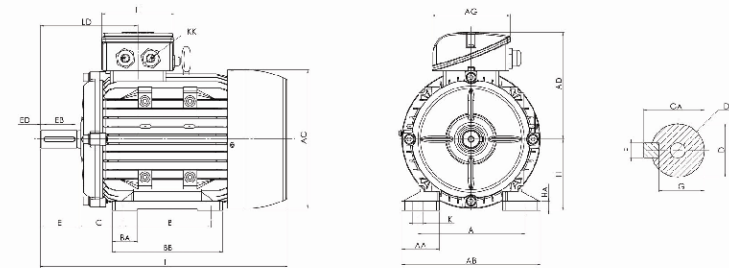
▲ IM B14B H80-132

型号 Type	AC	AD	AG	D	D-H	E	EB	ED	F	G	GA	HD	METRIC	L	LB	LD	LL	M	N	P	S	T
80	58	129	104	19	M6X16	40	30	5	6	15.5	21.5	208	2-M25X1.5	290	250	75	104	100	80	120	M8	3
90S	75	140	104	24	M8X19	50	40	5	8	20	27	227.5	2-M25X1.5	325	275	95	104	115	95	140	M8	3
90L	75	140	104	24	M8X19	50	40	5	8	20	27	227.5	2-M25X1.5	350	300	95	104	115	95	140	M8	3
100L	98	156	104	28	M10X22	60	50	5	8	24	31	255	2-M32X1.5	398	338	88.5	104	130	110	160	M8	3.5
112M	219	156	124	28	M10X22	60	50	5	8	24	31	275.5	2-M32X1.5	447	387	92	114	130	110	160	M8	3.5
132S	258	188	124	38	M12X28	80	65	7.5	10	33	41	317	2-M32X1.5	475	395	100	114	155	130	200	M10	3.5
132M	258	188	124	38	M12X28	80	65	7.5	10	33	41	317	2-M32X1.5	513	433	100	114	155	130	200	M10	3.5

▲ IM B34B H80-132

型号 Type	AA	AB	AC	AD	AC	BB	C	D	DH	E	EB	ED	F	C	GA	H	HA	K	KK	L	LB	LD	LL	M	N	P	S	T		
80	125	35	160	167	147	104	100	150	50	19	M6X16	40	30	5	6	15.5	21.5	80	10	4-Φ10	2-M25X1.5	304	254	112	104	130	110	160	M8	3.5
90S	140	36	176	182	155	104	100	161	56	24	M8X19	50	40	5	8	20	27	90	12	4-Φ10	2-M25X1.5	336	286	130	104	130	110	160	M8	3.5
90L	140	36	176	182	155	104	125	186	56	24	M8X19	50	40	5	8	20	27	90	12	4-Φ10	2-M25X1.5	361	311	130	104	130	110	160	M8	3.5
100L	180	40	200	205	166	104	140	213	63	28	M10X22	60	50	5	8	24	31	100	14	4-Φ12	2-M25X1.5	406	346	139	104	165	130	200	M10	3.5
112M	190	50	240	219	182	124	140	225	70	28	M10X22	60	50	5	8	24	31	112	15	4-Φ12	2-M32X1.5	452	392	147	114	165	130	200	M10	3.5
132S	216	55	262	258	203	124	140	200	89	38	M12X28	80	65	7.5	10	33	41	132	18	4-Φ12	2-M32X1.5	470	390	172	114	215	180	250	M12	4
132M	216	55	262	258	203	124	178	238	89	38	M12X28	80	65	7.5	10	33	41	132	18	4-Φ12	2-M32X1.5	508	428	172	114	215	180	250	M12	4

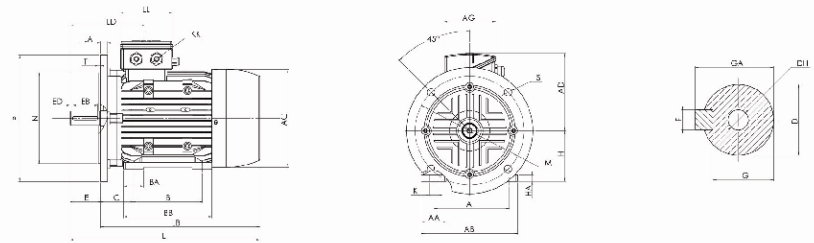
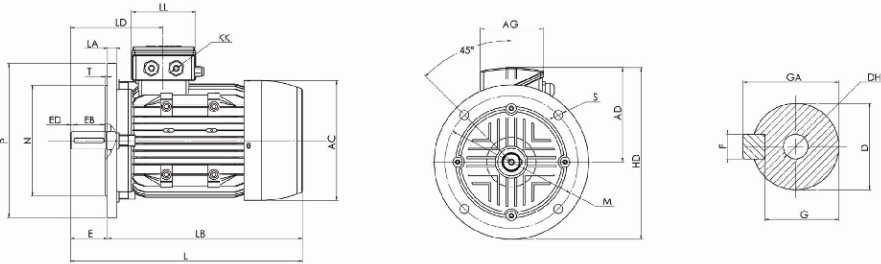
## HSC Series Dimensional Drawings



▲ IM B3 H80-355

型号 Type	极数 Poles	A	AA	AE	AC	AD	AG	B	BD	C	D	DH	C	EB	ED	F	G	GA	H	HA	K	KK	L	LD	LL
80	2, 4, 6, 8	125	34	160	167	147	104	100	150	50	19	M6X16	40	30	5	6	15.5	21.5	80	10	4-Φ10	2-M25X1.5	304	119	104
90S	2, 4, 6, 8	140	36	176	182	154.5	104	100	161	56	24	M8X19	50	40	5	8	20	27	90	12	4-Φ10	2-M25X1.5	336	143	104
90L	2, 4, 6, 8	140	36	176	182	154.5	104	125	186	56	24	M8X19	50	40	5	8	20	27	90	12	4-Φ10	2-M25X1.5	361	143	104
100L	2, 4, 6, 8	160	40	200	205	166	104	140	213	63	28	M10X22	60	50	5	8	24	31	100	14	4-Φ12	2-M25X1.5	406	147	104
112M	2, 4, 6, 8	190	50	240	219	182	124	140	225	70	28	M10X22	60	50	5	8	24	31	112	15	4-Φ12	2-M32X1.5	452	147	114
132S	2, 4, 6, 8	215	55	262	258	203	124	140	200	89	38	M12X28	80	65	7.5	10	33	41	132	18	4-Φ12	2-M32X1.5	470	172	114
132M	2, 4, 6, 8	215	55	262	258	203	124	178	238	89	38	M12X28	80	65	7.5	10	33	41	132	18	4-Φ12	2-M32X1.5	508	172	114
160M	2, 4, 6, 8	254	65	314	314	251	162	210	260	108	42	M16X36	110	90	10	12	37	45	160	20	4-Φ14.5	2-M40X1.5	608	256	154
160L	2, 4, 6, 8	254	65	314	314	251	162	254	304	108	42	M16X36	110	90	10	12	37	45	160	20	4-Φ14.5	2-M40X1.5	652	256	154
180M	2, 4, 8	279	70	349	355	267	162	241	311	121	48	M16X36	110	90	10	14	42.5	51.5	180	22	4-Φ14.5	2-M40X1.5	688	271	154
180L	4, 6, 8	279	70	349	355	267	162	279	349	121	48	M16X36	110	90	10	14	42.5	51.5	180	22	4-Φ14.5	2-M40X1.5	726	271	154
200L	2, 4, 6, 8	319	70	388	397	299	210	305	369	133	55	M20X42	110	100	5	16	49	59	200	25	4-Φ16.5	2-M50X1.5	779	296	190
225S	4, 8	336	75	431	446	322	210	285	368	149	60	M20X42	140	125	7.5	18	53	64	225	28	4-Φ16.5	2-M50X1.5	824	328	190
225M	2	336	75	431	446	322	210	311	393	149	55	M20X42	110	100	5	16	49	59	225	28	4-Φ16.5	2-M50X1.5	819	296	190
225M	4, 6, 8	336	75	431	446	322	210	311	393	149	60	M20X42	140	125	7.5	18	53	64	225	28	4-Φ16.5	2-M50X1.5	840	328	190
250M	2	400	80	484	485	358	248	349	445	168	90	M20X42	140	125	7.5	18	53	64	250	30	4-Φ24	2-M63X1.5	910	347	218
250M	4, 6, 8	400	80	484	485	358	248	349	445	168	95	M20X42	140	125	7.5	18	58	69	250	30	4-Φ24	2-M63X1.5	910	347	218
280S	2	457	85	542	547	387	248	368	485	190	85	M20X42	140	125	7.5	18	58	69	280	35	4-Φ24	2-M63X1.5	982	355.5	218
280S	4, 6, 8	457	85	542	547	387	248	368	485	190	75	M20X42	140	125	7.5	20	67.5	79.5	280	35	4-Φ24	2-M63X1.5	982	355.5	218
280M	2	457	85	542	547	387	248	419	536	190	85	M20X42	140	125	7.5	18	58	69	280	35	4-Φ24	2-M63X1.5	1033	355.5	218
280M	4, 6, 8	457	85	542	547	387	248	419	536	190	75	M20X42	140	125	7.5	20	67.5	79.5	280	35	4-Φ24	2-M63X1.5	1033	355.5	218
315S	2	508	120	628	620	527	320	405	570	216	95	M20X42	140	125	7.5	18	58	69	315	45	4-Φ28	2-M63X1.5	1194	397	280
315S	4, 6, 8, 10	508	120	628	620	527	320	405	570	216	90	M20X42	170	160	5	22	71	85	315	45	4-Φ28	2-M63X1.5	1224	427	280
315M	2	508	120	628	620	527	320	457	680	216	95	M20X42	140	125	7.5	18	58								

### HSC Series Dimensional Drawings



#### ▲ IMB5 H80-355

型号 Type	极数 Poles	AC	AD	AG	D	DH	E	EB	ED	F	G	GA	HD	KK	L	LA	LB	LD	LL	M	N	P	S	T
80	2, 4, 6, 8	167	154.5	104	19	M8X16	40	30	5	6	15.5	21.5	255	2-M25X1.5	304	12	264	112	104	165	130	200	12	3.5
90S	2, 4, 6, 8	182	162	104	24	M8X19	50	40	5	8	20	27	262	2-M25X1.5	336	12	286	130	104	165	130	200	12	3.5
90L	2, 4, 6, 8	182	162	104	24	M8X19	50	40	5	8	20	27	262	2-M25X1.5	361	12	311	130	104	165	130	200	12	3.5
100L	2, 4, 6, 8	205	175.5	104	28	M10X22	60	50	5	8	24	31	299	2-M32X1.5	406	13	346	139	104	215	190	250	14.5	4
112M	2, 4, 6, 8	210	190	124	28	M10X22	60	50	5	8	24	31	315	2-M32X1.5	452	14	392	147	114	215	190	250	14.5	4
132S	2, 4, 6, 8	258	203	124	38	M12X26	80	65	7.5	10	33	41	353	2-M32X1.5	470	14	390	172	114	265	230	300	14.5	4
132M	4, 6, 8	258	203	124	38	M12X26	80	65	7.5	10	33	41	353	2-M32X1.5	508	14	428	172	114	265	230	300	14.5	4
160M	2, 4, 6, 8	314	251	162	42	M16X36	110	90	10	12	37	45	426	2-M40X1.5	608	15	498	256	154	300	250	350	18.5	5
160L	2, 4, 6, 8	314	251	162	42	M16X36	110	90	10	12	37	45	426	2-M40X1.5	652	15	542	256	154	300	250	350	18.5	5
180M	2, 4, 8	355	287	162	48	M16X36	110	90	10	14	42.5	51.5	445	2-M40X1.5	688	15	578	271	154	300	250	350	18.5	5
180L	4, 6, 8	355	287	162	48	M16X36	110	90	10	14	42.5	51.5	445	2-M40X1.5	726	15	616	271	154	300	250	350	18.5	5
200L	2, 4, 6, 8	397	299	210	55	M20X42	110	100	5	18	49	59	449	2-M50X1.5	779	17	669	296	190	350	300	400	18.5	5
225S	4, 8	446	322	210	60	M20X42	140	125	7.5	18	53	64	547	2-M50X1.5	824	20	684	329	190	400	350	450	18.5	5
225M	2	446	322	210	55	M20X42	110	100	5	18	49	59	547	2-M50X1.5	819	20	709	299	190	400	350	450	18.5	5
225M	4, 6, 8	446	322	210	60	M20X42	140	125	7.5	18	53	64	547	2-M50X1.5	849	20	709	329	190	400	350	450	18.5	5
250M	2	485	358	248	60	M20X42	140	125	7.5	18	53	64	633	2-M63X1.5	910	22	770	347	218	500	450	550	18.5	5
250M	4, 6, 8	485	358	248	65	M20X42	140	125	7.5	18	58	69	633	2-M63X1.5	910	22	770	347	218	500	450	550	18.5	5
280S	2	547	387	248	65	M20X42	140	125	7.5	18	58	69	662	2-M63X1.5	982	22	842	355.5	218	500	450	550	18.5	5
280S	4, 6, 8	547	387	248	75	M20X42	140	125	7.5	20	67.5	79.5	662	2-M63X1.5	982	22	842	355.5	218	500	450	550	18.5	5
280M	2	547	387	248	65	M20X42	140	125	7.5	18	58	69	662	2-M63X1.5	1033	22	893	355.5	218	500	450	550	18.5	5
280M	4, 6, 8	547	387	248	75	M20X42	140	125	7.5	20	67.5	79.5	662	2-M63X1.5	1033	22	893	355.5	218	500	450	550	18.5	5
315S	2	620	527	320	65	M20X42	140	125	7.5	18	58	69	857	2-M63X1.5	1194	22	1054	397	280	600	550	660	24	6
315S	4, 6, 8, 10	620	527	320	80	M20X42	170	160	5	22	71	85	857	2-M63X1.5	1224	22	1054	427	280	600	550	660	24	6
315M	2	620	527	320	65	M20X42	140	125	7.5	18	58	69	857	2-M63X1.5	1304	22	1154	397	280	600	550	660	24	6
315M	4, 6, 8, 10	620	527	320	80	M20X42	170	160	5	22	71	85	857	2-M63X1.5	1334	22	1154	427	280	600	550	660	24	6
315L	2	620	527	320	65	M20X42	140	125	7.5	18	58	69	857	2-M63X1.5	1304	22	1154	397	280	600	550	660	24	6
315L	4, 6, 8, 10	620	527	320	80	M20X42	170	160	5	22	71	85	857	2-M63X1.5	1334	22	1154	427	280	600	550	660	24	6
355M	2	698	642	360	75	M20X50	140	130	5	20	67.5	79.5	1042	2-M63X1.5	1486	25	1345	414	330	740	680	800	24	6
355M	4, 6, 8, 10	698	642	360	95	M24X50	170	160	5	25	85	100	1042	2-M63X1.5	1516	25	1345	414	330	740	680	800	24	6
355L	2	698	642	360	75	M20X50	140	130	5	20	67.5	79.5	1042	2-M63X1.5	1486	25	1345	414	330	740	680	800	24	6
355L	4, 6, 8, 10	698	642	360	95	M24X50	170	160	5	25	85	100	1042	2-M63X1.5	1516	25	1345	414	330	740	680	800	24	6

#### ▲ IM B35 H80-355

型号 Type	极数 Poles	AA	AB	AC	AD	AG	B	BB	C	D	DF	E	EB	ED	F	G	GA	H	HA	K	KK	L	LA	LB	LD	LL	M	N	P	S	T	
80	2, 4, 6, 8	125	34	160	167	147	104	100	150	50	19	M6X15	40	30	5	6	15.5	21.5	80	10	4-Φ10	2-M25X1.5	304	12	264	112	104	165	130	200	12	3.5
90S	2, 4, 6, 8	140	36	176	182	155	104	100	161	56	24	M8X19	50	40	5	8	20	27	90	12	4-Φ10	2-M25X1.5	336	12	286	130	104	165	130	200	12	3.5
90L	2, 4, 6, 8	140	36	176	182	155	104	125	186	56	24	M8X19	50	40	5	8	20	27	90	12	4-Φ10	2-M25X1.5	361	12	311	130	104	165	130	200	12	3.5
100L	2, 4, 6, 8	160	40	200	205	166	104	140	213	63	28	M10X22	60	50	5	8	24	31	100	14	4-Φ12	2-M32X1.5	406	13	346	139	104	215	180	250	14.5	4
112M	2, 4, 6, 8	190	50	240	219	182	124	140	225	70	28	M10X22	60	50	5	8	24	31	112	15	4-Φ12	2-M32X1.5	452	14	382	147	114	215	180	250	14.5	4
132S	2, 4, 6, 8	216	55	262	258	203	124	140	200	89	38	M12X26	80	65	7.5	10	33	41	132	18	4-Φ12	2-M32X1.5	470	14	390	172	114	265	230	300	14.5	4
132M	4, 6, 8	216	55	262	258	203	124	178	238	89	38	M12X26	80	65	7.5	10	33	41	132	18	4-Φ12	2-M32X1.5	508	14	428	172	114	265	230	300	14.5	4
190M	2, 4, 6, 8	254	65	314	314	251	162	210	260	108	42	M16X36	110	90	10	12	37	45	160	20	4-Φ14.52	M40X1.5	608	15	498	256	154	300	250	350	18.5	5
160L	2, 4, 6, 8	254	65	314	314	251	162	254	304	108	42	M16X36	110	90	10	12	37	45	160	20	4-Φ14.52	M40X1.5	652	15	542	256	154	300	250	350	18.5	5
190M	2, 4, 8	279	70	349	355	267	162	241	311	121	48	M16X36	110	90	10	14	42.5	51.5	180	22	4-Φ14.52	M40X1.5	688	15	578	271	154	300	250	350	18.5	5
180L	4, 6, 8	279	70	349	355	267	162	279	349	121	48	M16X36	110	90	10	14	42.5	51.5	180	22	4-Φ14.52	M40X1.5	726	15	616	271	154	300	250	350	18.5	5
200L	2, 4, 6, 8	318	70	388	397	299	210	305	389	133	55	M20X42	110	100	5	16	49	59	200	25	4-Φ16.52	M50X1.5	779	17	669	296	190	350	300	400	18.5	5
225S	4, 8	356	75	431	446	322	210	286	368	149	60	M20X42	140	125	7.5	18	53	64	225	28	4-Φ18.52	M50X1.5	824	20	684	329	190	400	350	450	18.5	5
225M	2	356	75	431	446	322	210	311	393	149	65	M20X42	110	100	5	16	49	59	225	28	4-Φ18.52	M50X1.5	819	20	709	299	190	400	350	450	18.5	5
225M	4, 6, 8	356	75	431	446	322	210	311	393	149	60	M20X42	140	125	7.5	18	53	64	225	28	4-Φ18.52	M50X1.5	849	20	709	329	190	400	350	450	18.5	5
250M	2	406	80	484	485	358	248	349	445	168	60	M20X42	140	125	7.5	18	53	64	250	30	4-Φ24	2-M63X1.5	910	22	770	347	218	500	450	550	18.5	5
250M	4, 6, 8	406	80	484	485	358	248	349	445	168	65	M20X42	140	125	7.5	18	58	69	250	30	4-Φ24	2-M63X1.5	910	22	770	347	218	500	450	550	18.5	5
280S	2	457	85	542	547	387	248	368	485	190	65	M20X42	140	125	7.5																	



### HSEJ Series

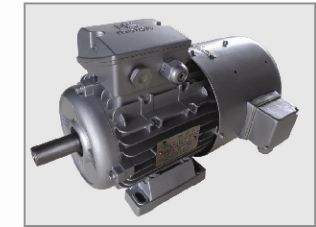
### Three Phase Asynchronous Induction Motor



型号 Type	额定功率 Rated Output		额定电流 Rated current			转速 (r.p.m)	效率 (%)	功率因数 Power Factor cos φ	启动转矩 (Nm)	变频器启动 时间 (S)	启动功率 (w)	额定电流 Is/In	堵转转矩 Ts/Tn	最大转矩 Tmax/Tn
	KW	HP	380	400	415									
SPEED 3000RPM 2-POLE 50HZ														
HSEJ 6312	0.18	0.25	0.53	0.5	0.48	2720	65	0.8	4	0.20	18	5.5	2.2	2.2
HSEJ 6322	0.25	0.37	0.69	0.66	0.63	2720	68	0.81	4	0.20	18	5.5	2.2	2.2
HSEJ 7112	0.37	0.5	0.99	0.94	0.91	2740	70	0.81	4	0.20	30	6.1	2.2	2.2
HSEJ 7122	0.55	0.75	1.4	1.33	1.28	2740	73	0.82	4	0.20	30	6.1	2.2	2.3
HSEJ 8012	0.75	1	1.9	1.8	1.74	2840	72.1	0.83	7.5	0.20	40	6.5	2.2	2.3
HSEJ 8022	1.1	1.5	2.65	2.51	2.42	2840	75	0.84	7.5	0.20	40	7.0	2.2	2.3
HSEJ 90S-2	1.5	2	3.51	3.33	3.21	2840	77.2	0.84	15	0.20	50	7.0	2.2	2.3
HSEJ 90L-2	2.2	3	4.93	4.66	4.51	2840	79.7	0.85	15	0.20	50	7.0	2.2	2.3
HSEJ 100L-2	3	4	6.41	6.09	5.87	2860	81.5	0.87	30	0.20	65	7.0	2.2	2.3
HSEJ 112M-2	4	5.5	8.20	7.88	7.60	2980	83.1	0.88	40	0.25	70	7.0	2.2	2.3
HSEJ 132S1-2	5.5	7.5	11.2	10.6	10.3	2900	84.7	0.88	75	0.25	95	7.0	2.0	2.3
HSEJ 132S2-2	7.5	10	15	14.3	13.8	2900	86	0.88	75	0.25	95	7.0	2.0	2.3
HSEJ 160M1-2	11	15	21.4	20.3	19.6	2930	87.6	0.89	150	0.35	110	7.0	2.0	2.3
HSEJ 160M-2	15	20	28.8	27.4	26.4	2930	88.7	0.89	150	0.35	110	7.0	2.0	2.2
SPEED 1500RPM 4-POLE 50HZ														
HSEJ 6314	0.12	0.17	0.44	0.42	0.41	1310	57	0.72	4	0.20	18	5.0	2.1	2.4
HSEJ 6324	0.18	0.25	0.62	0.59	0.57	1310	60	0.73	4	0.20	18	5.0	2.1	2.4
HSEJ 7114	0.25	0.37	0.79	0.75	0.72	1330	65	0.74	4	0.20	30	5.0	2.1	2.4
HSEJ 7124	0.37	0.5	1.12	1.06	1.02	1330	67	0.75	4	0.20	30	5.2	2.1	2.4
HSEJ 8014	0.55	0.75	1.57	1.49	1.43	1390	71.1	0.75	7.5	0.20	40	6.0	2.4	2.3
HSEJ 8024	0.75	1	2.08	1.97	1.9	1390	72.1	0.76	7.5	0.20	40	6.0	2.3	2.3
HSEJ 90S-4	1.1	1.5	2.89	2.74	2.64	1390	75	0.77	15	0.20	50	6.5	2.3	2.3
HSEJ 90L-4	1.5	2	3.73	3.55	3.42	1390	77.2	0.79	15	0.20	50	6.5	2.3	2.3
HSEJ 100L1-4	2.2	3	5.17	4.91	4.74	1390	79.7	0.81	30	0.20	65	7.0	2.2	2.3
HSEJ 100L2-4	3	4	6.81	6.47	6.24	1410	81.5	0.82	30	0.20	70	7.0	2.2	2.3
HSEJ 112M-4	4	5.5	8.91	8.46	8.16	1410	83.1	0.82	40	0.25	70	7.0	2.2	2.3
HSEJ 132S-4	5.5	7.5	11.9	11.3	10.9	1435	84.7	0.83	75	0.25	95	7.0	2.2	2.3
HSEJ 132M-4	7.5	10	15.7	15	14.4	1440	86	0.84	75	0.25	95	7.0	2.2	2.3
HSEJ 160M-4	11	15	22.7	21.6	20.8	1440	87.6	0.84	150	0.35	110	7.0	2.2	2.3
HSEJ 160L-4	15	20	30.2	28.7	27.6	1460	88.7	0.85	150	0.35	110	7.0	2.2	2.2
SPEED 1000RPM 6-POLE 50HZ														
HSEJ 90S-6	0.75	1	2.26	2.15	2.07	910	70	0.72	15	0.20	50	5.5	1.9	2.2
HSEJ 90L-6	1.1	1.5	3.14	2.98	2.87	910	72.9	0.73	15	0.20	50	5.5	1.9	2.2
HSEJ 100L-6	1.5	2	4.04	3.83	3.7	920	75.2	0.75	30	0.20	70	6.0	1.9	2.2
HSEJ 112M-6	2.2	3	5.65	5.36	5.17	935	77.7	0.76	40	0.25	70	6.0	2.0	2.2
HSEJ 132S-6	3	4	7.52	7.14	6.88	960	79.7	0.76	75	0.25	95	6.5	2.0	2.2
HSEJ 132M1-6	4	5.5	9.8	9.31	8.97	960	81.4	0.76	75	0.25	95	6.5	2.0	2.2
HSEJ 132M2-6	5.5	7.5	13.1	12.4	12	960	83.1	0.77	75	0.35	95	6.5	2.0	2.0
MSEJ160M-6	7.5	10	17.4	16.6	16	970	84.7	0.77	150	0.35	110	6.5	2.0	2.0
MSEJ160L-6	11	15	22.2	21.1	20.3	970	86.4	0.78	150	0.35	110	6.5	1.7	2.0

### HSVP Series

### Three Phase Asynchronous Induction Motor



▲ SPEED 1500RPM 4-POLE 50HZ

型号 Type	功率 Output		转速 Speed /r/min	额定电流 Rated current			额定转矩 Rated Torque Nm	堵转转矩 Ts/Tn	最大转矩 Tmax/Tn	堵转电流 Is/In	变频调速范围 Frequency Range with constant output HZ	恒功率调速范围 Frequency Range with constant output HZ
	Kw	HP		380	400	415						
HSVP 631-4	0.12	0.17	1310	0.44	0.42	0.41	0.64	2.1	2.2	4.4	5-50	5-120
HSVP 632-4	0.18	0.25	1310	0.62	0.59	0.57	1.26	2.1	2.2	4.4		
HSVP 711-4	0.25	0.37	1330	0.79	0.75	0.72	1.73	2.1	2.2	5.2		
HSVP 712-4	0.37	0.5	1330	1.12	1.06	1.02	2.54	2.1	2.2	5.2		
HSVP 801-4	0.55	0.75	1390	1.57	1.49	1.43	3.78	2.4	2.3	5.2		
HSVP 802-4	0.75	1	1390	2.05	1.95	1.88	5.15	2.4	2.3	6		
HSVP 90S-4	1.1	1.5	1390	2.84	2.7	2.6	7.5	2.3	2.3	6		
HSVP 90L-4	1.5	2	1390	3.67	3.49	3.36	10.23	2.3	2.3	6		
HSVP 100L1-4	2.2	3	1410	5.08	4.83	4.65	14.8	2.3	2.3	7		
HSVP 100L2-4	3	4	1410	6.72	6.39	6.15	20.18	2.3	2.3	7		
HSVP 112M-4	4	5.5	1435	8.79	8.35	8.05	26.53	2.3	2.3	7		
HSVP 132S-4	5.5	7.5	1440	11.7	11.1	10.7	36.48	2.3	2.3	7		
HSVP 132M-4	7.5	10	1440	15.6	14.8	14.3	49.74	2.3	2.3	7		
HSVP 160M-4	11	15	1460	22.5	21.4	20.6	71.59	2.2	2.3	7		
HSVP 160L-4	15	20	1460	30	28.5	27.4	96.12	2.2	2.3	7.5		
HSVP 180M-4	18.5	25	1470	36.3	34.5	33.2	120.19	2.2	2.3	7.5		
HSVP 180L-4	22	30	1470	42.9	40.8	39.3	142.03	2.2	2.3	7.5		
HSVP 200L-4	30	40	1470	57.9	55	53	180.96	2.2	2.3	7.2		
HSVP 225S-4	37	50	1475	70.2	66.7	64.2	198.51	2.2	2.3	7.2		
HSVP 225M-4	43	60	1475	84.9	80.6	77.7	290.37	2.2	2.3	7.2		
HSVP 250M-4	55	75	1480	103	98	94.5	354.9	2.2	2.3	7.2		
HSVP 280S-4	75	100	1480	140	133	128	483.95	2.2	2.3	7.2		
HSVP 280M-4	90	125	1480	167	159	153	578.79	2.2	2.3	7.2		
HSVP 315S-4	110	150	1480	201	191	184	707.41	2.1	2.2	6.9		
HSVP 315M-1	132	180	1480	240	226	220	848.80	2.1	2.2	6.0		
HSVP 315L1-4	160	220	1480	288	273	263	1029	2.1	2.2	6.9		
HSVP 315L2-4	200	270	1480	368	341	329	1286.2	2.1	2.2	6.9		
HSVP 355M-4	250	340	1490	443	421	406	1602.4	2.1	2.2	6.9		
HSVP 355L-4	315	430	1490	528	500	481	2019	2.1	2.2	6.9		